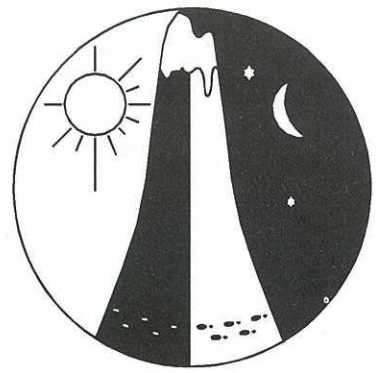


MORGAN GALLOP

1995 SPRING 12 HOUR ROGAINE

7 OCTOBER 1995



WARA

LEGEND

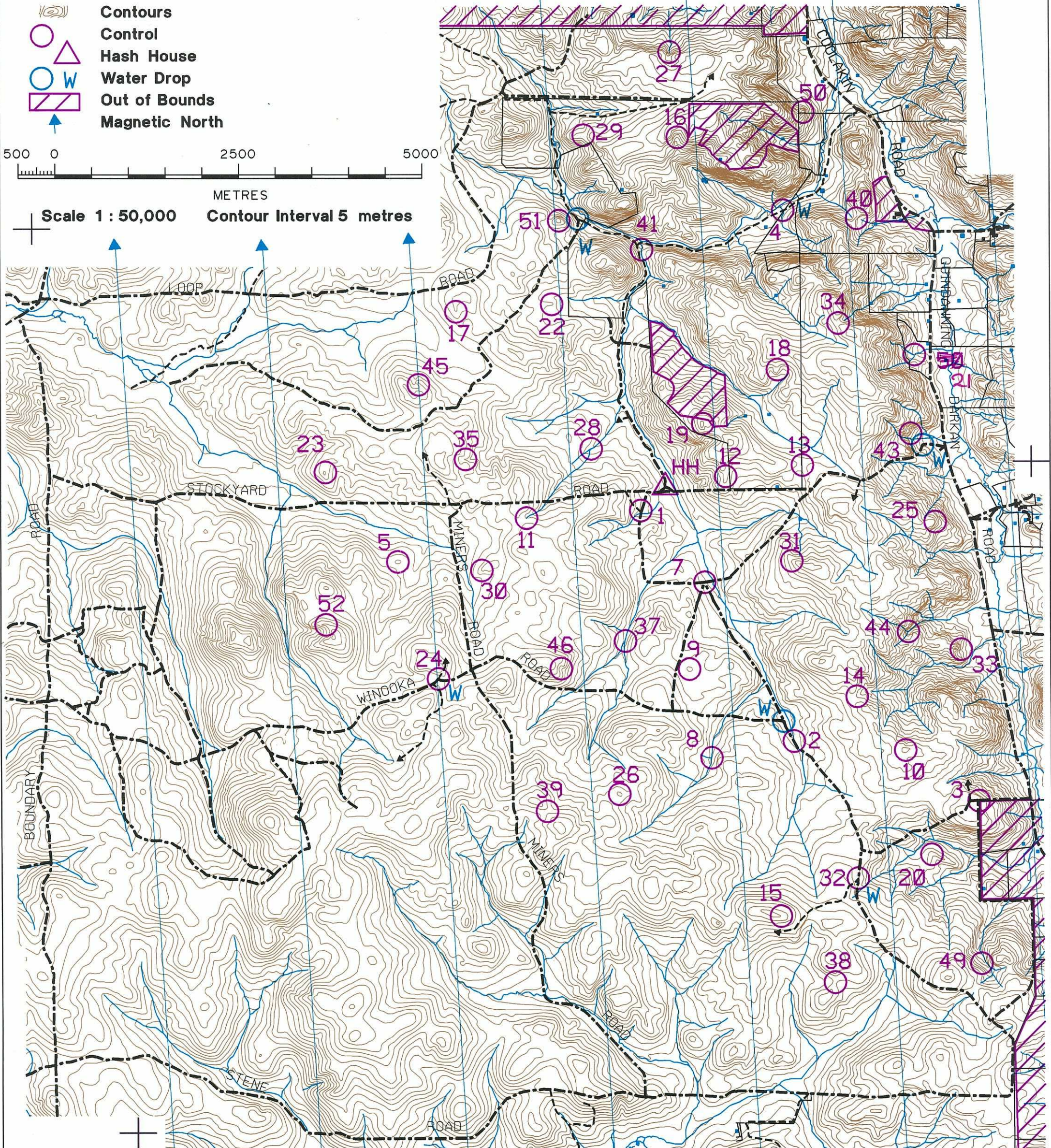
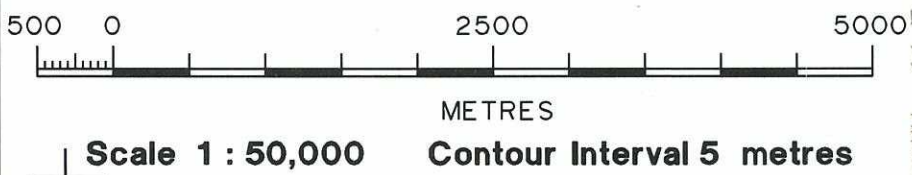
- Major Road/Track
- - - Minor or Indistinct Track
- ← Track continues
- ~ Water Course
- Fence
- Building
- Dam
- () Contours
- Control
- △ Hash House
- W Water Drop
- ▨ Out of Bounds
- ↑ Magnetic North

Setters: Craig Barrett
Leigh Barrett
Carolyn Bendotti
Paul Bendotti

Vetters: Jill Elderfield
Peter Elderfield

Sunset 18:21
Moon Rise 17:07

Thank you to John and Dennis Morgan
Possession of this map does not give right of entry



No	Points	Description	No	Points	Description
1	20	The track junction	25	60	The spur
2	20	The track/watercourse crossing	26	60	The broad knoll
3	20	The fence corner	27	60	The watercourse
4	20	The track/watercourse crossing	28	60	The watercourse junction
5	20	The knoll	29	60	The spur, on a rocky knoll
7	30	The track junction	30	60	The spur
8	30	The watercourse junction	31	70	The spur
9	30	The knoll	32	70	The track junction, then 300m at 300°
10	30	The knoll	33	70	The spur south side, base of a granite outcrop
11	30	Head of the watercourse	34	70	The saddle
12	30	The spur	35	70	The gully
13	40	The saddle	37	80	The watercourse junction
14	40	Head of the broad gully	38	80	The saddle
15	40	The spur	39	80	The saddle
16	40	The gully	40	80	The saddle
17	40	The spur	41	80	The watercourse, bottom of waterfall
18	40	A Knoll	43	90	The spur, below a 10m high granite breakaway
19	50	The knoll	44	90	The watercourse junction
20	50	The knoll	45	90	The spur
21	50	The watercourse junction	46	90	The gully
22	50	The spur	49	100	A 50x50 Rock Surface, eastern edge
23	50	The knoll	50	100	A knoll
24	50	The NE track junction	51	100	The knoll
			52	100	The spur
	2690	Total Points			

Δ - 28 ✓

35 ✓

45 ✓

17 ✓

22 -

51 -

41 -

29 ✓

16 - 27 ✓

50 ✓

40 ✓

34 ✓

21 ✓

43 ✓

25 ✓

44 ✓

36 ✓

10 ✓

26 ✓

49 ✓

38 ✓

15 ✓

32 - NH

Checked 32 - 5/11